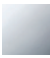

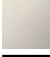





36 200 361



- Inversor giratorio
- Roseta Ø 60 mm
- Plaquita de porcelana NEUTRAL

	Cromo	36 200 361-00
	Platino cepillado	36 200 361-06
	Platino	36 200 361-08
	Latón (Oro 23k)	36 200 361-09
	Latón cepillado (Oro 23k)	36 200 361-28
	Dark Platinum cepillado	36 200 361-99

**Complementos necesarios**

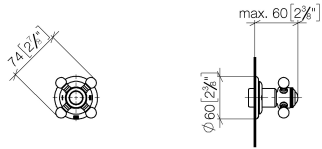


**Inversor empotrado de dos vías - 35 202 970 90**

- Profundidad de montaje mín. 85 mm
- Profundidad de montaje máx. 155 mm

36 200 361

mm [inches]



### Diagrama de flujo

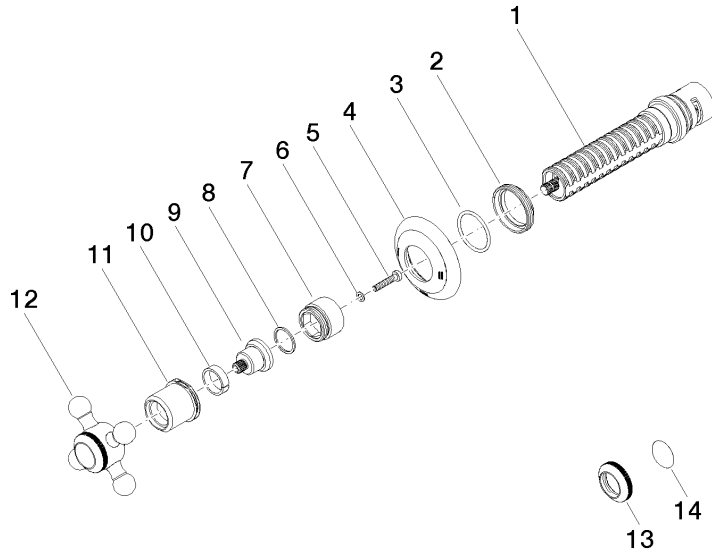


### Certificado

LGA\_38379.

WRAS\_2307045.

36 200 361



Lista de piezas de recambios

N°	Número de artículo	Denominación	Cantidad de montaje	Plazo de entrega
1	90 90 03 304 10 90	inversor	1	2
2	09 23 10 125-00	tuerca	1	10
3	90 14 10 063 00 90	sello	1	2
4	09 27 36 105-00	roseta	1	10
5	90 30 30 075 00 90	tornillo	1	2
6	09 30 11 194 90	disco	1	2
7	09 18 30 007-00	camisa	1	10
8	90 28 10 030 00 90	anillo	1	2
9	09 12 12 064-00	alojamiento	1	10
10	90 14 15 021 00 90	anillo	1	2
11	09 21 02 161-00	funda	1	10
12	04 20 36 100 02-00	manilla	1	10
13	09 20 36 005-00	manilla	1	10
14	09 26 01 016 90	accessorio	1	2